



The Vice President of India awarded Sage University Top Private University in Central India in 2019



SAGE University awarded for "Excellence in Academic & Research Innovation" presented by ASSOCHAM



"The Icon of Madhya Pradesh" by Times of India from Chief Minister of M.P.



Felicitated by 'Excellence Award' from Honorable Chief Minister



INDORE - THE NEXT BEST CHOICE FOR QUALITY EDUCATION AMONG THE CAREER ASPIRANTS

For the sixth year in a row, the city has been named "the cleanest city in India," and it has secured a spot among the first 20 Indian cities to be transformed into smart cities. Indore is India's Biggest Educational Hub and the only city that has both IIT and IIM, which offer centers of excellence for learning and education. The State Administration is making concerted efforts to implement the New Education Policy to provide more career opportunities for young people. Indore offers a perfect blend of Heritage and Modern culture with a variety of tourist places to visit, including majestic palaces coexisting with lip-smacking food options. The city's geographical location makes it easily accessible from all parts of India. In addition to that, Indore has a thriving job market, making it a popular destination for students and job seekers alike. The city's vibrant atmosphere and student-friendly environment make it an ideal destination for students seeking a quality education. With the presence of reputed educational institutions, top-notch faculty, and state-of-the-art infrastructure, Indore is indeed the next best choice for quality education among career aspirants.



Leading Private University in Central India Award of Berg Business Excellence & Research Group Singapore



Best Upcoming University in M.P. Awarded by Former Higher Education Minister Shri Jeetu Patwari

Transforming
Your
Passion into
Profession



SAGE
UNIVERSITY
—INDORE—



SAGE UNIVERSITY
—INDORE—

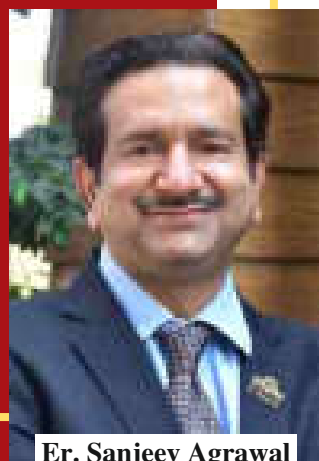
Indore Campus : Kailod Kartal, Rau Bypass, Indore, Madhya Pradesh, India-452020
Tollfree : 18001007031 Ph.: +91 95225 78382, 9522578482
Website : www.sageuniversity.in, Email : admission@sageuniversity.in



The University of Thoughts & Innovation



www.sageuniversity.in



Er. Sanjeev Agrawal
Chancellor & CMD, The SAGE Group

Since its modest origins, SAGE has grown into a dominant force in Central India over the past four decades. Our unwaveringly exceptional performance has enabled us to compete among the top brands. The SAGE has served as a symbol of excellence and has been successful in accumulating several renowned national and international honours to add to its mantle of glory. The SAGE has evolved into a fully developed and diversified organization. The journey of SAGE is never over, and we do not doubt that it will keep setting new standards of excellence in the years to come.

SAGE University, Indore (SUI), a unique institution under SAGE, combines entrepreneurship, innovation, and technology to provide a dynamic learning environment. At SUI, the focus is on learning for the workplace. SUI is a higher education institution that not only encourages you to dream but also pushes, inspires, and prepares you to bring about the change that is so crucial to improve your tomorrow.

SUI envisions nurturing intellectual capital by transforming aspiring students into competent professionals and leaders contributing to societal development. The mission of SUI is to Integrate quality learning and research, transcend cultural boundaries, and nurture talent with a holistic approach.

Under the authority granted by Sub-Section (1) of Section 28 of the Madhya Pradesh Niji Vishwavidyalaya (Sthapna Avam Sanchalan) Adhiniyam, 2007, as published in the M.P. State Government Gazette, SUI was established by an act of the state government of Madhya Pradesh. SUI is located on a hilltop in Indore, away from the city's congestion, in a beautiful, verdant setting.

38 Glorious Years of
Excellence And Leadership

THE SAGE GROUP

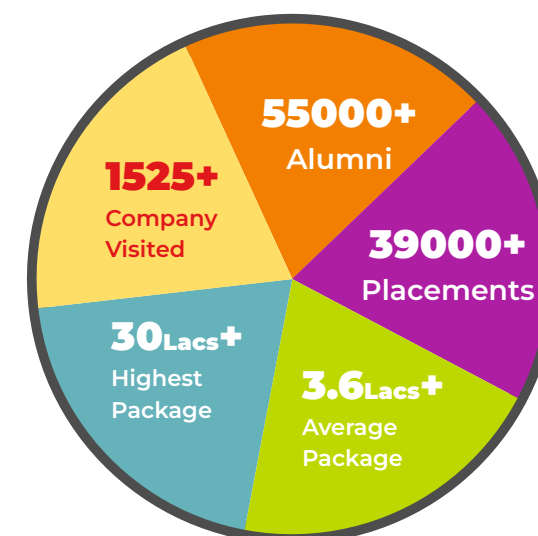


EDUCATION
25,000+ Students Studying
55,000+ Alumni
39,000+ Placement

REAL ESTATE
20,000+ Happy Families
09+ Running Projects
30+ Residential Projects Completed

ELECTRICAL INFRASTRUCTURE 03 States Presence
INDUSTRY 02 Cement Pole Factories
CSR 120+ Social Initiatives, Blood Donation Camps, Awareness Office & Other Activities

PLACEMENTS @ SAGE GROUP



 AMAN GUPTA 30 LPA	 TARUN UPADHYAY 10 LPA	 SWADHEEN DUBEY 9 LPA	 TANYA PANWAR 9 LPA	 ANIRUDDH SHARMA 8.65 LPA	 TEJAS CHATURBHUJ 8 LPA	 PANKAJ SINGH CHAMYAL 8 LPA
 PRINCE VANI 8 LPA	 PAWAN SHARMA 7.3 LPA	 ESHAN RATHORE 7 LPA	 SOUMYA SOOD 6.6 LPA	 NEHA NAGA 6 LPA	 SAKSHI KATARA 6 LPA	 AASTHA DUBEY 6 LPA
 ANKIT SINGH 5 LPA	 ABHINAV PUNASE 5 LPA	 AMAR KELOTRA 5 LPA	 ROHIT KUMAWAT 5 LPA	 TARUN PATEL 4.32 LPA	 BHUPENDRA MOURYA 4 LPA	 AMAN GUPTA 4 LPA

Our Placement Partners



RANKING @ SAGE GROUP



Engineering & Technology



Management



Excellence for Academic Digitisation



Top in Madhya Pradesh



Institute of Journalism & Mass Communication



Law & Legal Studies



Best in Central India



Best B-School in Central India



Law School in Central India

Training Placement & Industry Interaction Cell (TPIIC)

We are committed to employability, and in Training and Placement, we groom our students to the utmost excellence. In the current industrial scenario, students are being trained for high-skilled jobs. SAGE University capitalizes on the placements for UG and PG students by getting a sufficient number of opportunities for employment. The effort made in the direction of making our students Employable can be seen in our placement statistics over the years, both in quality and quantity. It is clear from the perk packages that our students are being offered.

Affiliations or Accreditations



Academic & Industry Partners



SAGE Student Ambassador Program

The Sage Student Ambassador Program is a leadership opportunity for students who are dedicated to serving and representing SAGE University, Indore. Student Ambassador will be a part of Sage Student Ambassador Council in which they will hold different positions and perform their duties in various task groups. Members in different task groups like Counselling Task Group, Branding & Promotion Task Group, Event Task Group, Printing & Publicity Task Group, Library Task Group, R&D Task Group, Website Task group, SAGE Professional Chapter Developers Club Task Group, T&P and EDI Task Group, Alumni Task Group, SAGE Summer School & Summer Training Task Group, SAGE Talk & TED Talk Task Group, Girls Hostel Task Group, Boys Hostel Task Group.

ADMISSION PROCEDURE

Admission to all the programs is on merit basis based upon **"SAGE Entrance Exam (SEE)"** conducted through online/offline mode, which will be facilitated through the designated center only. **Applications are invited through online/offline mode.**



**Best University
Best Opportunity**



LIFE @ SUI

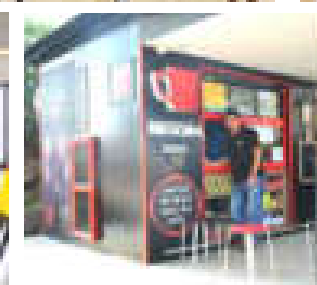
SUI aims to provide world-class education to a broad spectrum of students as part of its long-term vision and mission. To achieve this, SUI offers merit scholarships, bank loan assistance, and study loans to deserving and talented students.

Salient Features

Experienced faculty members
Hand holding with personal attention
Learning beyond the classroom
Contemporary curriculum

Metro Level Infrastructure & Education

Best Tissue Culture Lab in MP
Best Placement
Flexible Class Timing
Project based Learning
Best Moot Court in MP



ACADEMIC PROGRAMS & FEE STRUCTURE 2023-24	
Institute of Advanced Computing	Yearly Fees (INR)
B.Tech in Artificial Intelligence / Data Science (Samatrix)	1,25,000
B.Tech in Cyber Security & Forensic (Cialfor / Bluest Mettle Solution)	1,25,000
B.Tech in Computer Engineering (STL / Sunstone)	1,25,000
B.Tech in Computer Science Engineering	1,00,000
M.Tech in Artificial Intelligence / Data Science / Cyber Security	75,000
Institute of Engineering & Technology	Yearly Fees (INR)
Diploma in CSE / ME / CE / EE	30,000
Diploma (LET) in CSE / ME / CE / EE	30,000
B.Tech in Computer Science & Engineering	1,00,000
B.Tech in Information Technology	60,000
B.Tech in Electronics & Communication Engineering	60,000
B.Tech in Civil Engineering / Mechanical Engineering	60,000
B.Tech (LET) in CSE	80,000
B.Tech (LET) in CE / EC / ME	40,000
M.Tech in Computer Science & Engineering / Digital Communication	40,000
M.Tech in Automobile Engineering	40,000
ME in Production Engineering & Engineering Design	40,000
Institute of Biological Sciences	Yearly Fees(INR)
B.Sc. CBZ	30,000
B.Sc. (Hons.) in Bio Technology / Microbiology	45,000
M.Sc. in Bio Technology / Microbiology	40,000
Institute of Sciences	Yearly Fees (INR)
B.Sc. PCM	30,000
B.Sc. (Hons.) in Computer Sciences	30,000
B.Sc. (Hons.) in Forensic Science	55,000
M.Sc. PCM	30,000
M.Sc. in Forensic Science	55,000
Institute of Arts & Humanities	Yearly Fees (INR)
B A	30,000
B A (Hons.) in Economics / English Literature / Psychology	30,000
M A in English Literature / Psychology / Economics	30,000
Institute of Design	Yearly Fees (INR)
B.Design (Apparel and Fashion Design, Interior & Space Planning)	75,000

ACADEMIC PROGRAMS & FEE STRUCTURE 2023-24	
Institute of Architecture	Yearly Fees (INR)
B. Arch.	70,000
Institute of Agriculture Sciences	Yearly Fees (INR)
B.Sc (Hons.) in Agriculture Program	75,000
Institute of Computer Application	Yearly Fees (INR)
BCA (MOU with iNURTURE)	1,00,000
BCA (MOU with Sunstone)	64,000
MCA	50,000
Institute of Management Studies	Yearly Fees (INR)
BBA in Marketing / HRM / Finance / Event Management Entrepreneurship / Banking & Finance / Hospital Administration	60,000
BBA in Aviation	1,10,000
BBA in Business Analytics	75,000
BBA (MOU with Sunstone)	65,000
MBA with Dual Specialization in Marketing / HRM / Finance / I T Production & Operation Management	75,000
MBA in Banking & Finance / Hospital Administration / Event Management / Entrepreneurship	75,000
MBA in Business Analytics	1,10,000
MBA in Aviation	1,78,000
MBA (MOU with Sunstone)	1,37,000
MBA in Agri-Business Management	60,000
MBA Applied Management (With all Specializations)	75,000
Institute of Law & Legal Studies	Yearly Fees (INR)
BA LLB (Hons.)	55,000
BBA LLB (Hons.)	50,000
LLB (Hons.)	50,000
LLM	40,000
Institute of Commerce	Yearly Fees (INR)
B. Com.	35,000
B. Com. (Hons.) in Banking & Finance / Taxation	35,000
B. Com. in Finacial Market-NSE / Computer Application	40,000
Institute of Journalism & Mass Communication	Yearly Fees (INR)
B A in Journalism & Mass Communication	50,000
M A in Journalism & Mass Communication	40,000
Institute of Pharmaceutical Sciences	Yearly Fees (INR)
Diploma Pharmacy	1,00,000
B. Pharmacy	90,000